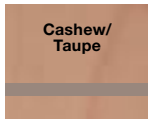


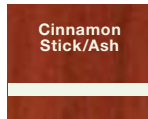
LM922-188 2-ply 1/16"



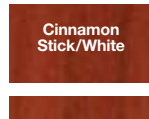
LM922-138 2-ply 1/16"



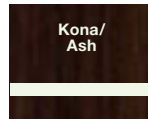
LM922-134 2-ply 1/16"



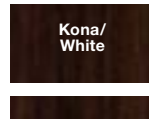
LM922-022 2-ply 1/16"



LM922-222 2-ply 1/16"



LM922-082 2-ply 1/16"



LM922-012 2-ply 1/16"

TECHNICAL SPECIFICATIONS

*Some LaserMax® foils are not recommended for applications in which UV stability is a requirement.

*LaserMax® metals are available with NoMark® Plus finish by adding "0+" to the end of the item code.

Material

Microsurfaced impact acrylic

Finish

Matte non-glare
Brushed metal
Patterned
Gloss ■

Sheet Size

24-1/8" x 48-3/4" // 613mm x 1238mm
Port Wine & Harbor Grey*
23-1/2" x 49" // 597mm x 1245mm
Kona/Ash & Kona/White*
23-5/8" x 49" // 600mm x 1245mm

Engraving Depth

.003" // 0.08mm

Usage

Interior/exterior signage
Personal identification
Trophies, awards & plaques

Capabilities

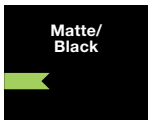
Bevels
Heat bendable
Permits fine detail engraving
Scores
Silk screens
Bonds
Hot stamps
Screen prints
UV stable
Drills
Laser vector cuts
Saws
Shears
UV-printable

◆ Not recommended for harsh or high humidity indoor or outdoor applications.

LASERMAX® REVERSE LIGHT BLOCKERS NEW



LM922-341 2-ply 1/16"



LM922-401 2-ply 1/16"



LM922-841 2-ply 1/16"



LM922-201 2-ply 1/16"



LM922-301 2-ply 1/16"



LM922-511 2-ply 1/16"



LM922-601 2-ply 1/16"



LM922-701 2-ply 1/16"



LM922-351 2-ply 1/16"



LM922-361 2-ply 1/16"



LM922-881 2-ply 1/16"



LM922-861 2-ply 1/16"



LM922-761 2-ply 1/16"

TECHNICAL SPECIFICATIONS

Material

Microsurfaced impact acrylic for reverse engraving

Finish

Matte non-glare
Gloss available upon request

Sheet Size

24-1/8" x 48-3/4"
613mm x 1238mm

Engraving Depth

.003" // 0.08mm

Usage

Interior signs
Exterior signs
ADA compliant/tactile signs
Safety signs
Badges
Control panels

Capabilities

Laser vector cuts
Screen prints
Fine detail
Back-lighting
Saws
Bevels
Bonds
Hot-Stamp
UV Stable
Shears
Drills
Heat bendable/formable
Paint/color-fill
UV print receptive

METALGRAPH PLUS®



MP912-314 2-ply 1/32"
MP922-314 2-ply 1/16"
MP942-314 2-ply 1/8"



MP912-864 2-ply 1/32"
MP922-864 2-ply 1/16"
MP942-864 2-ply 1/8"



MP912-764 2-ply 1/32"
MP922-764 2-ply 1/16"
MP942-764 2-ply 1/8"



MP912-364 2-ply 1/32"
MP922-364 2-ply 1/16"
MP942-364 2-ply 1/8"



MP912-316 2-ply 1/32"
MP922-316 2-ply 1/16"
MP942-316 2-ply 1/8"



MP912-315 2-ply 1/32"
MP922-315 2-ply 1/16"
MP942-315 2-ply 1/8"



MP912-766 2-ply 1/32"
MP922-766 2-ply 1/16"
MP942-766 2-ply 1/8"



MP912-765 2-ply 1/32"
MP922-765 2-ply 1/16"
MP942-765 2-ply 1/8"



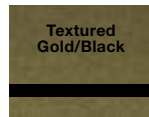
MP922-767 2-ply 1/16"
MP942-767 2-ply 1/8"



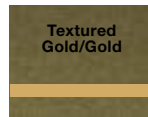
MP922-313 2-ply 1/16"
MP942-313 2-ply 1/8"



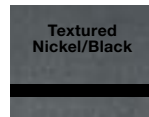
MP822-864 2-ply 1/16"



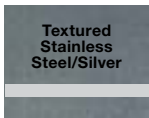
MP822-764 2-ply 1/16"



MP822-767 2-ply 1/16"



MP822-364 2-ply 1/16"



MP822-313 2-ply 1/16"

TECHNICAL SPECIFICATIONS

Material

Microsurfaced impact acrylic

Finish

Brushed metal
Textured

Sheet Size

24-1/8" x 48-3/4" // 613mm x 1238mm

Engraving Depth

.003" // 0.08mm

Usage

Industrial tags
Interior/exterior signage
Outdoor weatherable
Personal identification
Photo laser engraving
Trophies, awards & plaques

Capabilities

Bevels
Drills
Hot stamps
Saws
Screen prints
Thermal prints
Bonds
Heat bendable
Laser vector cuts
Scores
Shears
UV stable